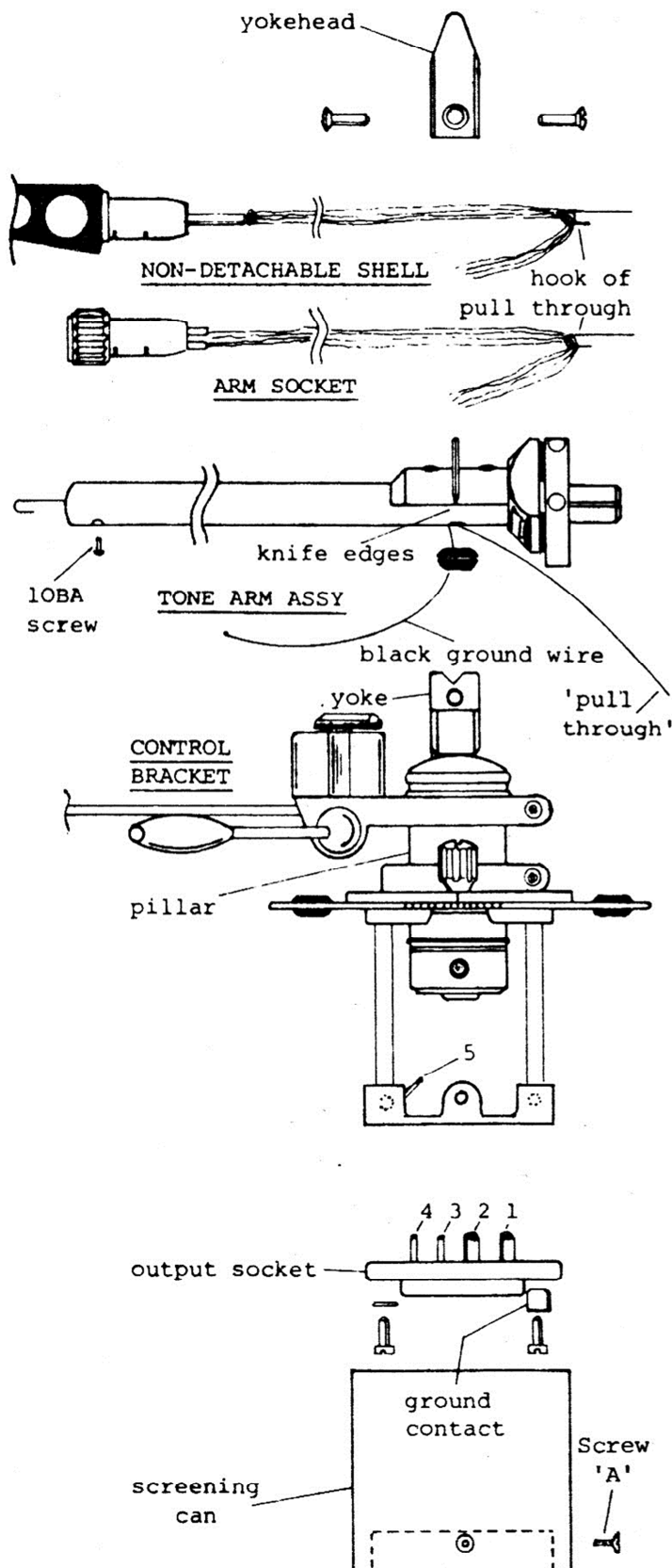


NOTE: The ARM SOCKET and the NON-DETACHABLE SHELL are NOT interchangeable on the two models. The tone arms differ in their length and the balance weights vary in size. To convert one model to the other, the complete tone arm assembly must be changed.



- a) Dismantle the output socket (2 screws) and remove the screening can (screw 'A').
- b) Unsolder all five wires.
- c) Remove the yokehead (2 screws).
- d) Remove the tone arm assembly.
- e) Remove the 10 BA screw retaining the arm socket or the non-detachable shell.
- f) Remove the arm socket or non-detachable shell. Ensure the black ground wire is not carried into the tone arm when the four wires are withdrawn.
- g) Remove the rubber grommet from the tone arm below the saddle.
- h) Make a 'pull through' from a suitable gauge of wire approx. 12" in length. Pass it through the tone arm from the grommet hole.
- i) Hook the wires of the arm socket or non-detachable shell, about 1½" from the end. Draw the wires through the tone arm. Take care not to hook and break the black ground wire, as this can only be replaced at the factory.
- j) Pass the five wires through the rubber grommet and re-fit into the tone arm.
- k) Carefully twist the free ends of the wires together for about ¼". Thread them through the pillar. Nest the knife edges into the yoke.
- l) Re-fit the yokehead (2 screws).
- m) Separate the wires and re-solder.
 - WHITE to No. 1 pin
 - RED to No. 2 pin
 - BLUE to No. 3 pin
 - GREEN to No. 4 pin
 - BLACK to ground tag No. 5
- n) Arrange the wires to relieve torsion.
- o) Slide on screening can, secure screw 'A' and re-assemble the output socket (2 screws, washer and ground contact).

IMPORTANT

TOOLS

Always select a screwdriver of the correct size in good condition. The appearance of the arm will be spoilt if the screw heads are damaged. Do not use a worn Allen key, it can permanently damage the screw sockets. Always use an instrument soldering iron, 10 WATTS maximum.

TONE ARM ASSY.

Do not remove the screws securing the saddle. They can only be replaced at the factory.

PILLAR ASSY.

Do not adjust or lubricate the bearings.